



# Better Market Street

Project Update July 13, 2021



March – End of Year

- SFPD & PCOs
- Signage audit w/ PD
- New VMS signs
- Traffic reporters
- Ride hailing & delivery
- New social media
- Regional transit agencies
- Ad buys – digital, radio, print
- Bus tails
- Map updates

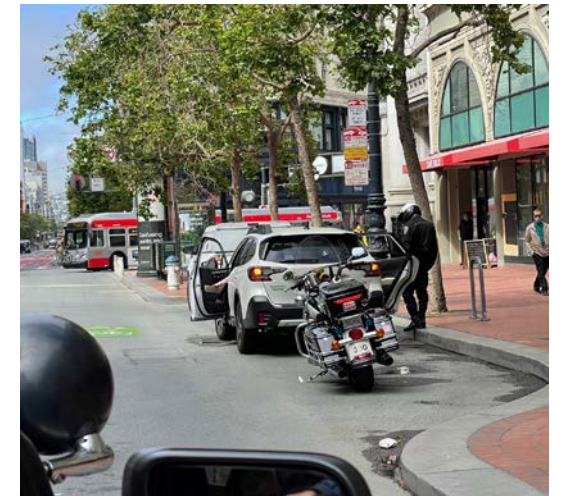


Going for a drive? Keep it off Market St. [#SFMTA](#) & [#SFPD](#) step up enforcement on [#carfreemarketstreet](#)



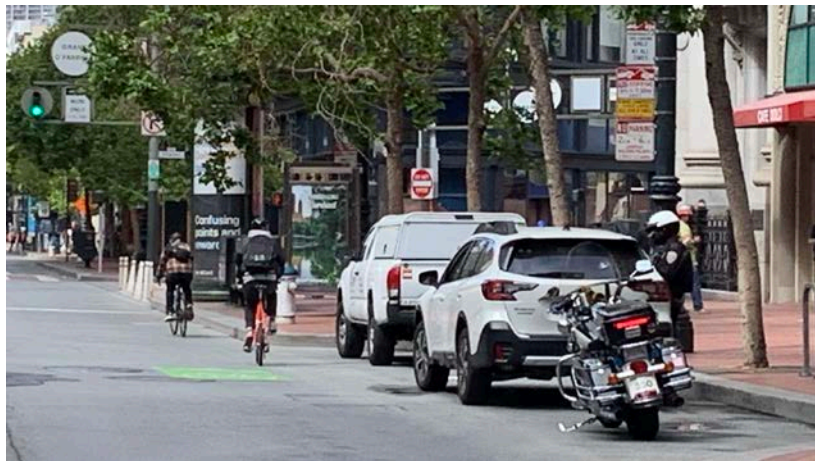
Creating a Better Market Street: Car-free Enforcement to Resume  
sfmta.com

1:30 PM · 4/20/21 · Salesforce - Social Studio



## Renewed Compliance Campaign launched March 29, 2021

- SFPD Traffic Company and SFMTA PCOs visible **5-6 days/week**
- More than **1323 stops** by SFPD in March and April
- Positive feedback on police presence – supports the Mayor’s **Mid Market Safety and Vibrancy Initiative**
- **Unauthorized drivers largely tourists** from the Bay Area or in rental cars



VIOLATION	Warnings	Citations
Fail to obey sign or signal	400	89
Drive in Transit Lane	336	56
Disobey traffic control device	124	40
Red Light Violation	42	3
Riding Scooter on sidewalk	31	1
Other	128	32
<b>Overall Totals</b>	<b>1092</b>	<b>239</b>

*SFPD contacts on Market St and adjacent cross streets 3/29-5/22/21*

- **May** – Two-way conversion of Jones Street
- **July** – Muni-Only lane from 3<sup>rd</sup> to Main Street, speed limit to 20 MPH
- **August** – Transit/Taxi/Bus interaction study
- **September** – Required Right Turn westbound at Hayes Street
- **Fall** – Two-way Spear Street
- **TBD** – Required right turn westbound at Geary Boulevard



# BETTER MARKET STREET QUARTERLY UPDATE

Reline 3'x5' sewer	Traffic signal upgrade	Repaving
Replace sewer laterals	New overhead wires	Curb ramps
Reline 16" water	Traction power upgrade	Landscaping
Replace 8" water distribution line	New center boarding islands	Limited sidewalk replacement
AWSS	Track replacement	Street furniture
	BART grate replacement	

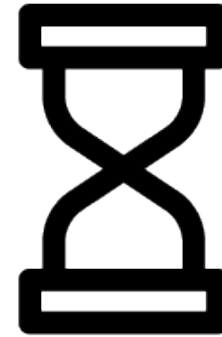
**Risk**



**Benefits**



**Time**



**Cost**



## ALTERNATIVE 1:

“SAS”

Safety, Accessibility & Streetscape

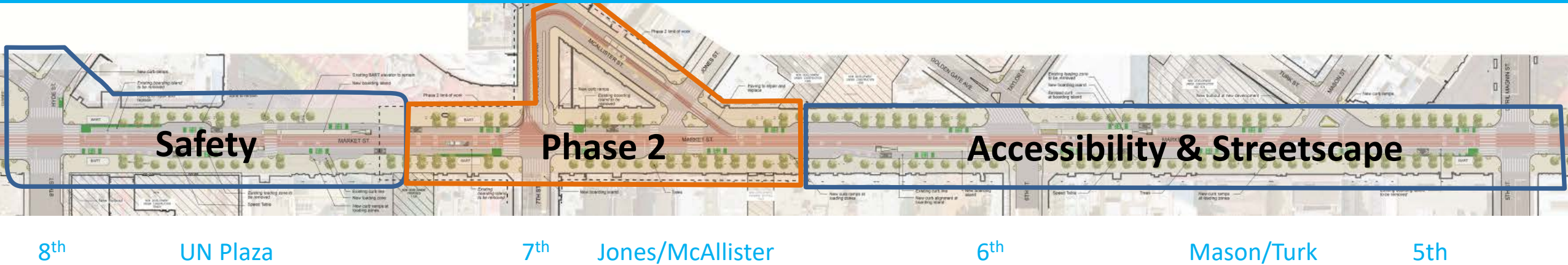
## ALTERNATIVE 2:

“COMBO”

Safety, Accessibility & Streetscape +  
Transit & Utility Upgrades

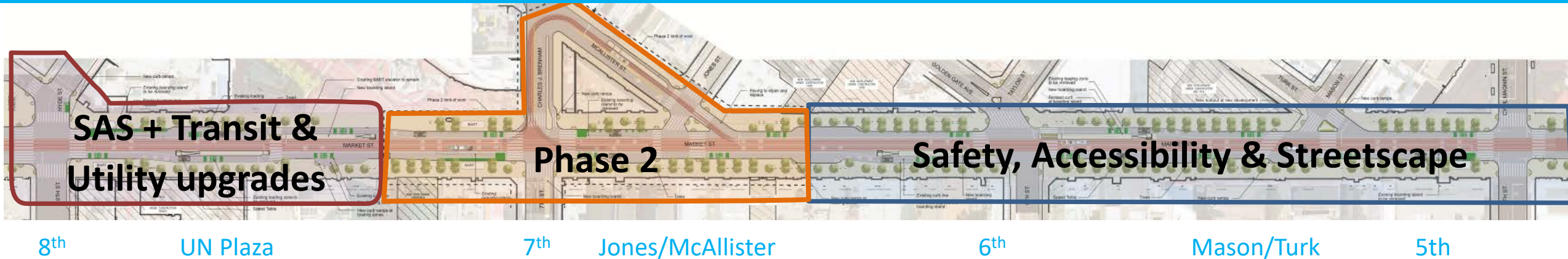


# Safety, Accessibility & Streetscape



- Provide a full **traffic signal upgrade** to assist people who bike, walk, drive and take transit
- **Repave** the curb lane and full intersections, including the crosswalks, to provide a smoother ride for cyclists and safer crossing for pedestrians
- Construct ADA-compliant **curb ramps** to increase accessibility
- Construct **bulb outs** at Sixth and Hyde streets, and at Market/Mason/Turk to shorten crossing distances
- Replace **sidewalk at the corners** to reduce tripping hazards
- **Streetscape** improvements including new trees, benches and bike racks

# Safety, Accessibility & Streetscape + Transit & Utility Upgrades



8th

UN Plaza

7th

Jones/McAllister

6th

Mason/Turk

5th

- **Safety, Accessibility & Streetscape** benefits PLUS
- **Full scope of work** from 8th Street through UN Plaza, including:
  - **Transit Improvements** – Improve transit performance and reliability; longer, wider fully accessible boarding islands; stop optimization
  - **Bicycle Improvements & Traffic Calming** – Prioritize curb lane in this area for people biking, taxis, and commercial vehicles; shift all transit to center lane for one block; install speed tables in curb lane
  - **Upgraded utilities** – Sewer, water, AWSS, track, Overhead Contact System wires, and traction power

**SAS includes critical surface improvements**

but

would remove transit improvements and state of good repair.

**SAS project is lower risk, fewer benefits.**



- Does not include full project scope
- Will require a return to the street to repair existing utilities

**Combination includes SAS plus full scope of work for 800 feet**

but

is higher risk and has more construction impacts

**Combination project is higher risk, but has more benefits**



- Unforeseen conditions with underground utilities
- Staying on schedule
- Greater impact to businesses and the F-Line streetcars

Federal BUILD Grant	<b>\$15M</b>
Federal OBAG	<b>\$3.4M</b>
State Affordable Housing & Sustainable Communities Grant	<b>\$2.7M</b>
Local Prop. K Sales Tax	<b>\$11.6M</b>
Local Certificates of Participation	<b>\$3M</b>
Local SFMTA GO Bond	<b>\$42M</b>
SFPUC	<b>\$22.1M</b>
BART	<b>\$3M</b>
	<hr/>
	<b>\$102.8M</b>

BUILD Deadline: Award Construction Contract by November 2021

# REFERENCE SLIDES

To ensure reliable and resilient utility services for customers, the San Francisco Public Utilities Commission (SFPUC) will repair, rehabilitate and replace aging and seismically vulnerable underground sewer pipes.

- Many of the large sewer pipes in center of Market Street were made of brick in the 1880's
- Some smaller sewers were installed in 1970's next to BART station
- Sewer laterals are of varying age depending on when properties were built



## Water Pipeline on Market Street between 5<sup>th</sup> and 8<sup>th</sup> Street

- Replaces existing cast iron water distribution mains at the end of useful life
- Replace 3,200 linear feet of 8-inch ductile iron water distribution main
- Replace 600 linear feet of 12-inch ductile iron water distribution main
- Install 1,600 linear feet of cure in place liner within existing 16-inch main



### Keeping the water flowing during and after construction

- Replace 8-inch pipe in existing alignment.
- Requires the installation of a temporary top line during construction

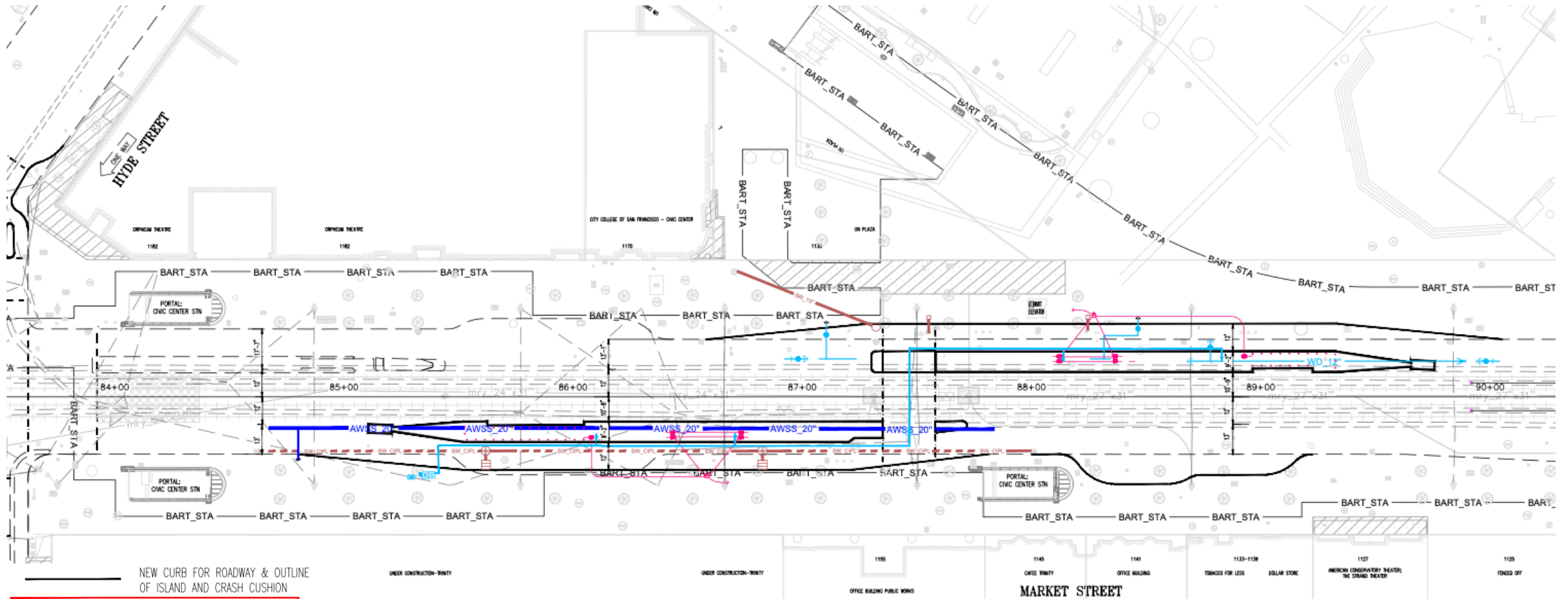
**Water distribution and transmission pipelines along Market Street are critical to water delivery to San Francisco customers.**

### **Seismic Vulnerability**

- The existing pipeline joints are made of lead and will fail in an earthquake.
- Current pipeline construction standards use rubber gasket connections that are much more seismically reliable.

**Auxiliary Water Supply System (AWSS) lines for firefighting will be relocated only in areas impacted by track/project work**





NEW CURB FOR ROADWAY & OUTLINE OF ISLAND AND CRASH CUSHION

- SW\_X" NEW SEWER LINE
- - - SW\_CIPL REHAB SEWER WITH CIPL
- AWSS\_X" NEW AWSS LINE
- WD\_X" NEW WATER LINE
- ⊕ NEW LPFH/HPFH
- NEW BOARDING ISLAND LIGHTING ELECTRICAL CONDUIT

## Utilities Triggered by New Boarding Islands